

DVM-HDT-KIT (DESK)

4K HDMI signal analyzer
Support HDMI 2.0 4K60Hz (YUV420) HDCP2.2/HDCP1.4

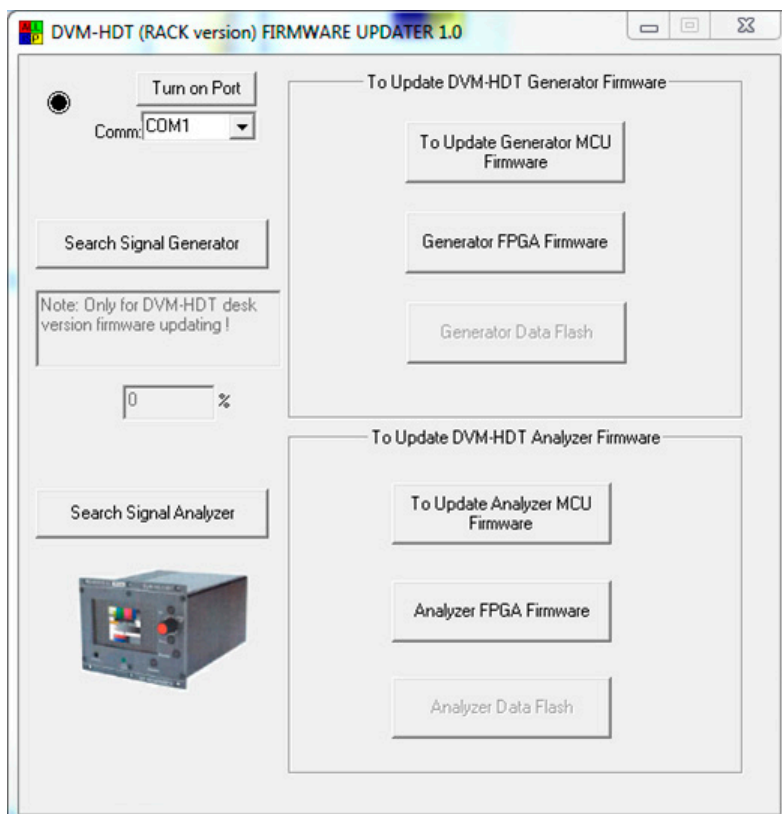
Update Guide for HDMI® 2.0 Toolkit
V1.0



CARDINAL **DVM**

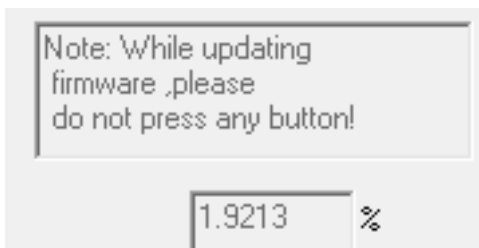
1. Introduction

1. Please download the latest firmware file and extract it to your harddrive
 - 1.1 DVM-HDT-KIT (Rackmount-Version without battery): <<<LINK>>>
 - 1.2 DVM-HDT-KIT-DESK (Desktop-Version with battery): <<<LINK>>>
2. Please start the update-software with a doubleclick on the ISP...EXE (please make sure that your current user is equipped with administrator rights).
3. Please connect the device with an USB A-A cable. It should be recognised by WINDOWS® as a virtual COM-Port. Now please click on „Search Signal Generator“ (when a Generator is connected) or click on „Search Signal Analyzer“ if a Analyzer is connected.
If a device is found, the port will turn on – which is visible through the red light on the left side:

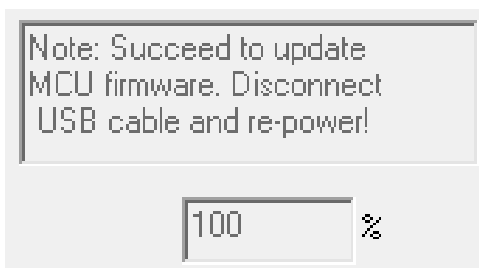


4. Now Start the update by choosing the button. The MCU update is for the whole GUI (graphical user interface), the FPGA update is for the internal processing.
Please contact our serviceteam under support@sommercable.com if you're not sure which kind of update your device needs!

5. during the update you can see the progress in percent – please don't press any button



6. You got following instructions when the update is finished:



- 6.1 please disconnect the USB cable and turn off the unit (even the unit looks like turned off!)
- 6.2 please restart the unit and -if needed- connect the USB cable again for the next update



DVM-HDT-KIT

SOMMER  **CABLE**

SOMMER CABLE GmbH
Humboldtstraße 32-36
75334 Straubenhardt / Germany
Support Tel: +49 (0)7082-49133-10
E-Mail: info@sommercable.com
www.sommercable.com